

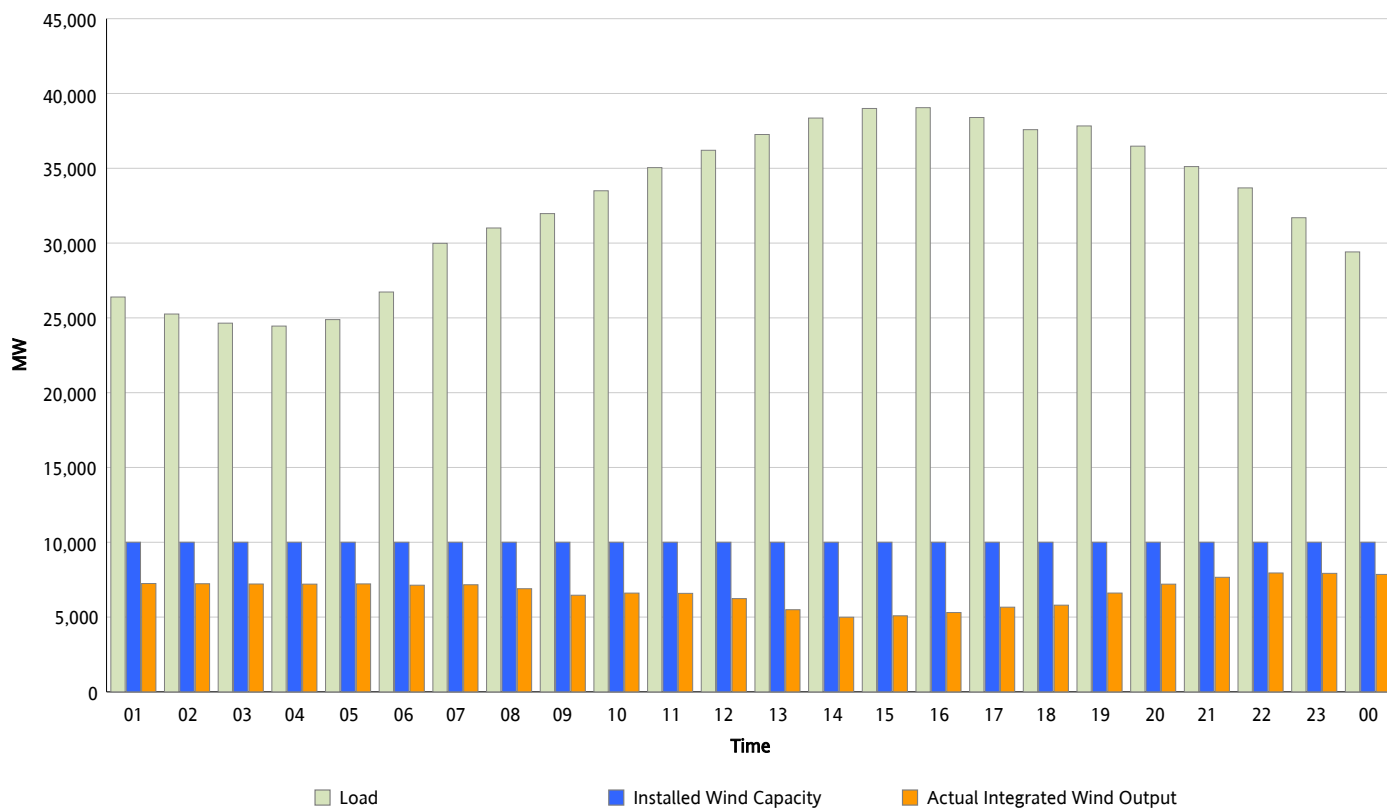


## ERCOT Grid Operations

### Wind Integration Report : 11/09/2012

Peak Load	39,053 MW
Load Peak Hour (HE)	16
Wind Over Peak	5,303 MW
Wind Record 11/09/12	8,368 MW
Max Wind Value*	8,048 MW
Wind Peak Time	21:40
Wind Integration %	24.2 %

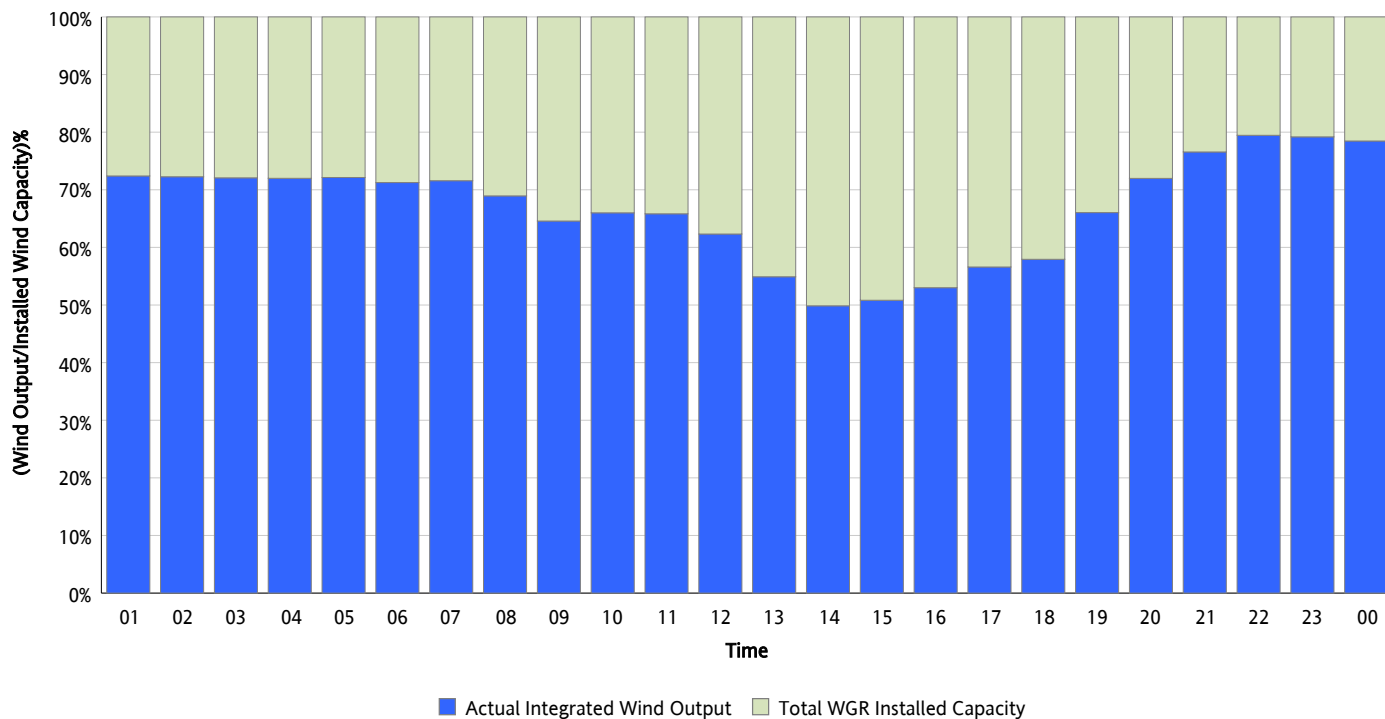
**Hourly Average Actual Load vs. Actual Wind Output**  
11/09/2012



\* Wind Record and Wind Max represent instantaneous values and the rest of the values are integrated over the hour

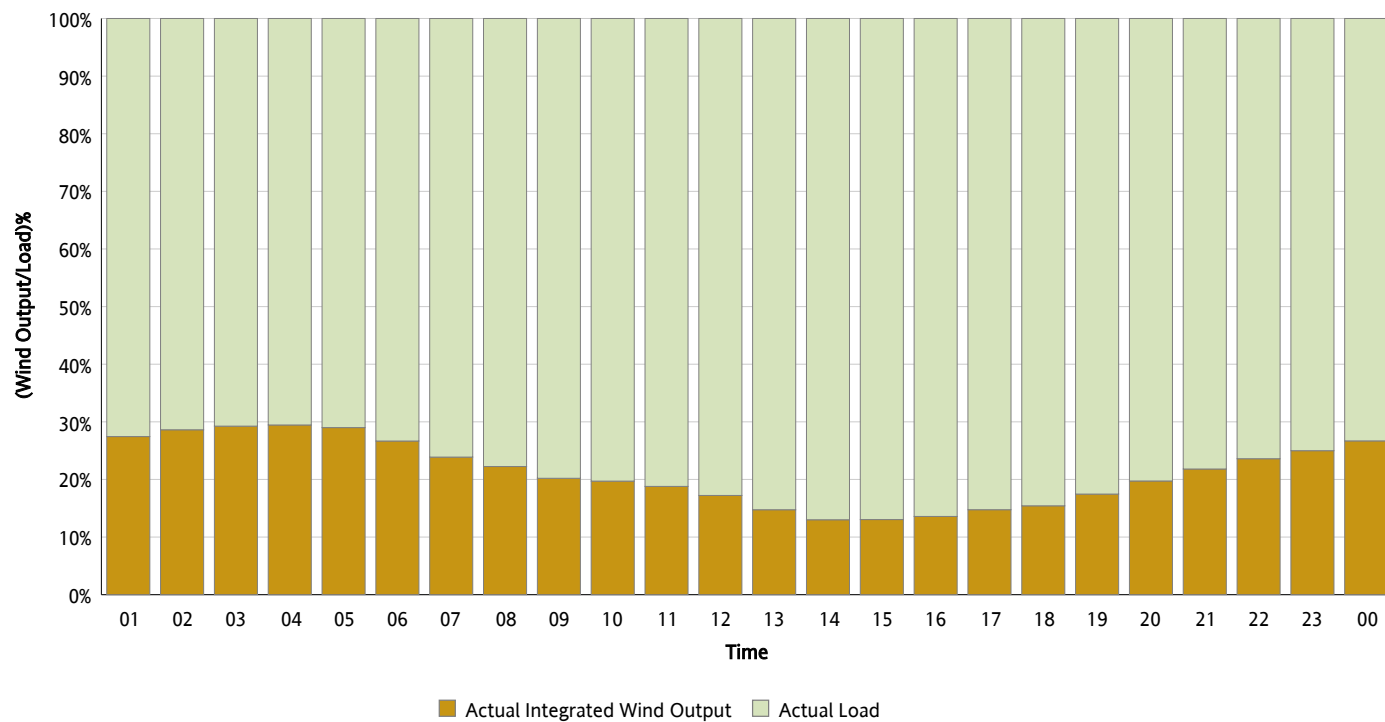
## Actual Wind Output as a Percentage of the Total Installed Wind Capacity

11/09/2012



## Actual Wind Output as a Percentage of the ERCOT Load

11/09/2012



## ERCOT Load vs. Actual Wind Output

11/02/2012 - 11/09/2012

